

Welcome to **RV WIFI DishyDock**, your complete Starlink Integration System.

This is the first part of the Integration System and a great way to pre wire your RV for Starlink.

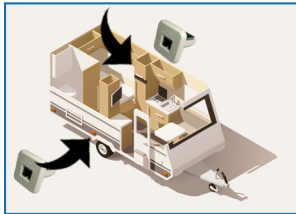
Other parts to add to your installation include:

- RV WIFI DishyDock Power - 12volt power adapter
- RV WIFI DishyDock Router or RV WIFI 5G router

Inclusions in this kit:

- 2 x Internal DishyDocks/RJ45 ports
- 1 x 5 meter DishyDock Ethernet cable

Please note: this installation is required to be located in a waterproof environment. *It is **NOT** a weatherproof product. For the weatherproof version, please choose RV WIFI Installation 'Weatherproof'.*

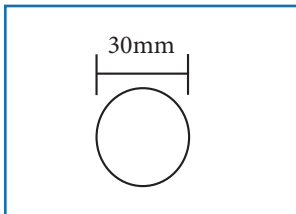


1. Choose your Port1 & 2 locations Internal & External).

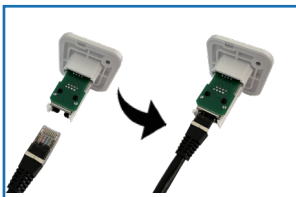
- The external Port must be located in a sealed TV box, Tunnel Boot, External Storage Box or other such waterproof location with void access to rear.
- the internal port in a cupboard, with enough space to fit both the DishyDock Power, DishyDock Router & install a 10A/12V dual power socket beside it.



2. Feed the Ethernet Cable through the wall cavity from port 1 to port 2.



3. Drill a 30mm sized hole to insert the DishyDock into the wall cavity.



4. Plug one end of the Ethernet Cable into the rear of Port 1. Attach the Port with screws to the wall material and snap on cover.

5. Repeat for Port 2.

**RV WIFI DISHYDOCK**

